

YOUR **KEY** TO ENDOSCOPY

ESGE 23rd annual congress
24th – 27th September 2014
SQUARE BRUSSELS



PRELIMINARY YEP PROGRAMME

HOW TO BECOME A MEMBER

ABOUT THE YEP

GET READY TO SUBMIT YOUR ABSTRACT!
REGISTRATION AND ABSTRACT SUBMISSION IS OPEN
FROM SPRING 2014 AND CLOSES 15 JUNE 2014.
YOU CAN SUBMIT YOUR ABSTRACT HERE



EARLY PACKAGE FOR YOUNG ENDOSCOPISTS: ESGE CONGRESS BRUSSELS 24TH – 27TH SEP. 2014

- **SPECIAL CONGRESS 2014 PACKAGE FOR RESIDENTS AND TRAINEES**
- **WHAT ARE YOUR YEP BENEFITS?**

Dear future Endoscopists,

The **YEP, or YOUNG ENDOSCOPIC PLATFORM** represents a group of enthusiastic and dynamic young gynaecological surgeons, as part of the ESGE structure and focuses on networking and professional development initiatives for future endoscopists.

WHY YOU SHOULD JOIN THE ESGE BRUSSELS CONGRESS 24TH – 27TH SEPTEMBER 2014:

We are very pleased to offer you a special early bird YEP package:



**Special low admission fee of 200 Euro
(66 % reduction in admission fee)***



**Dedicated training session on laparoscopic entry,
tips and tricks for avoiding complications**



**YEP Accommodation and 'YEP get together (Tuesday 23rd 7.00 PM)'
with special hotel deals**

*The YEP admission fee applies if you have registered before **15 June 2014** and your abstract has been accepted by the Scientific Committee. In case your abstract would be selected for the ESGE Awards, you have the chance to win a fee waiver for the next congress. Check here if the YEP status applies to you: www.esge.org/education/yep/how-to-become-a-yep-member

PRELIMINARY YEP PROGRAMME

SUBMIT YOUR ABSTRACT

HOW TO BECOME A MEMBER

YOUR **KEY** TO ENDOSCOPY

ESGE 23rd annual congress
24th – 27th September 2014
SQUARE BRUSSELS



PRELIMINARY YEP PROGRAMME

HOW TO BECOME A MEMBER

ABOUT THE YEP

GET READY TO SUBMIT YOUR ABSTRACT!
REGISTRATION AND ABSTRACT SUBMISSION IS OPEN
FROM SPRING 2014 AND CLOSES 15 JUNE 2014.
YOU CAN SUBMIT YOUR ABSTRACT HERE



PRELIMINARY YEP PROGRAMME

SITE 1 OF 3 

“FROM FUNDAMENTALS TO INNOVATION”

YEP MEETS WINNERS COURSE

BRUSSELS, WEDNESDAY 24TH, SEPTEMBER, 2014

Chairmen: Prof. Dr. R. L. De Wilde (DE), Prof. H. Brölmann (NL)
PD Dr. Markus Wallwiener (DE), Dr. Nuno Martins (PT), Dr. Marco Puga (Chile)

8:30 – 09:40	TRAINING	
8:30 – 8:40	Opening Remarks	(Markus Wallwiener, Nuno Martins)
8:40 – 8:55	Welcome to an structured program for training & assessment in MIS	Rudi Campo (BE)
08:55 – 09:10	Results of a Training programs for residence. Spain experience	Ramon Rovira (SP)
09:10 – 09:25	Pelvi-trainer: How to make yourself a cheap-one?	Jay Mehta (India)
09:25 – 09:40	Is there an impact on surgical skills to prevent complications?	Saska Gocevska (BE)
09:40 – 10:00	Coffee Break	



YOUR KEY TO ENDOSCOPY

ESGE 23rd annual congress
24th – 27th September 2014
SQUARE BRUSSELS



PRELIMINARY YEP PROGRAMME

HOW TO BECOME A MEMBER

ABOUT THE YEP

GET READY TO SUBMIT YOUR ABSTRACT!
REGISTRATION AND ABSTRACT SUBMISSION IS OPEN
FROM SPRING 2014 AND CLOSING 15 JUNE 2014.
YOU CAN SUBMIT YOUR ABSTRACT HERE



PRELIMINARY YEP PROGRAMME

SITE 2 OF 3 [<](#) [>](#)

BRUSSELS, WEDNESDAY 24TH, SEPTEMBER, 2014

10:00 – 11:00	FUNDAMENTALS	
10:00 – 10:15	Laparoscopy - Hardware, instruments & Ergonomics	Felix Neis (GE)
10:15 – 10:40	Clinical Pelvic Anatomy – boring or fun?	Hugo Gaspar (PT)
10:40 – 11:00	Electrosurgery in simple words	Helder Ferreira (PT)

11:00 – 12:00	STEPWISE TECHNIQUES	
11:00 – 11:15	5 alternative techniques to perform a safety entry	Matoula Diam (GR)
11:15 – 11:30	Diagnostic Laparoscopy: Our eyes inside	Ali Akdemir (TR)
11:30 – 11:45	Laparoscopy in Ectopic pregnancy: The techniques step by step	Sandra Bogdanyova (SL)
11:45 – 12:00	Ambulatory hysteroscopy: The instruments and the technique	Sam Schoenmakers (NL)
12:00 – 13:30	Lunch Break >	

YOUR **KEY** TO ENDOSCOPY

ESGE 23rd annual congress
24th – 27th September 2014
SQUARE BRUSSELS



PRELIMINARY YEP PROGRAMME

HOW TO BECOME A MEMBER

ABOUT THE YEP

GET READY TO SUBMIT YOUR ABSTRACT!
REGISTRATION AND ABSTRACT SUBMISSION IS OPEN
FROM SPRING 2014 AND CLOSES 15 JUNE 2014.
YOU CAN SUBMIT YOUR ABSTRACT HERE

BRUSSELS

PRELIMINARY YEP PROGRAMME

SITE 3 OF 3

BRUSSELS, WEDNESDAY 24TH, SEPTEMBER, 2014

13:30 – 14:45	CLINICS & RESEARCH	
13:30 – 13:45	In utero treatment of Congenital malformations in an animal Model	Charles Garabedian (FR)
13:45– 14:00	Inflammation and neural expression in Deep infiltrating endometriosis	Ignacio Miranda (CHI)
14:15 - 14:30	The QUSUM complications registry for hysterectomy (YEP Prize 2013)	Sara Driessen (NL)
14:30 - 14:45	Discussion	
14:45 - 15:00	Closing	

MEET YOUNG ENDOSCOPISTS FROM ALL OVER EUROPE
YEP GET-TOGETHER IN A NEARBY LOCATION
TUESDAY 23RD 7.00 PM

YOUR KEY TO ENDOSCOPY

ESGE 23rd annual congress
24th – 27th September 2014
SQUARE BRUSSELS



PRELIMINARY YEP PROGRAMME

HOW TO BECOME A MEMBER

ABOUT THE YEP

GET READY TO SUBMIT YOUR ABSTRACT!
REGISTRATION AND ABSTRACT SUBMISSION IS OPEN
FROM SPRING 2014 AND CLOSES 15 JUNE 2014.
YOU CAN SUBMIT YOUR ABSTRACT HERE



HOW DO I BECOME A MEMBER?

We are offering you an excellent opportunity to get in contact with our programme and community.

This year's ESGE congress in Brussels will once more be **a hub for both European and International professionals and specialists dedicated to gynaecological endoscopy**. The ESGE has been striving to make this special conference even more attractive for younger endoscopists in residency and training, and your presence and contribution will only strengthen our efforts. Learn more about our projects in teaching and education:

➔ www.esge.org/education/yep

WHAT ARE THE YEP OBJECTIVES?

By creating the Young Endoscopists Platform, the ESGE's goal is to strengthen the search for new methods and practices in endoscopy, and to bring expertise and know how together. The goal of the YEP is to establish and maintain a working group of willing and capable junior members:

- To further develop training in Endoscopy in Europe
- To give junior contribution to new developments, projects and research in Endoscopy
- Close cooperation with organisations such as the ➔ **ENTOG** and national society initiatives, i.e. the ➔ **DGGG „Junges Forum“**

WHY JOIN THE ANNUAL INTERNATIONAL ESGE CONGRESS?

The ESGE society trusts that the diffusion of minimally invasive surgery is very important, in particular among the surgeons of the future. In the last few years laparoscopy and minimal invasive surgery became the gold standard in the treatment of surgical gynaecological pathologies. Therefore the pursuit of the professionals towards the newly proposed techniques will attract even more delegates for the Brussels 2014 Congress.

YOUR **KEY** TO ENDOSCOPY

ESGE 23rd annual congress
24th – 27th September 2014
SQUARE BRUSSELS



PRELIMINARY YEP PROGRAMME

HOW TO BECOME A MEMBER

ABOUT THE YEP

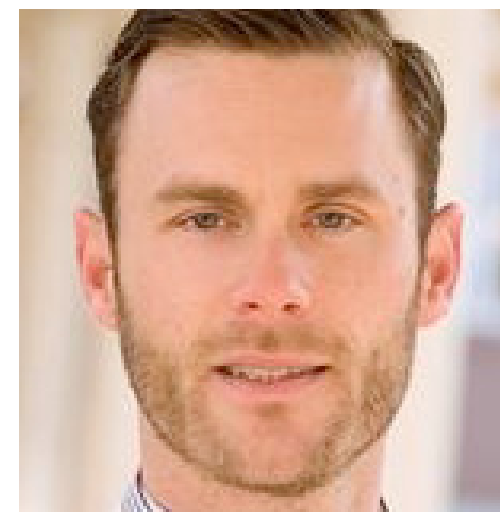
GET READY TO SUBMIT YOUR ABSTRACT!
REGISTRATION AND ABSTRACT SUBMISSION IS OPEN
FROM SPRING 2014 AND CLOSSES 15 JUNE 2014.
YOU CAN SUBMIT YOUR ABSTRACT HERE



YOU WILL LOVE BRUSSELS



**WE LOOK
FORWARD
TO SEEING YOU
IN BRUSSELS**



Markus Wallwiener
YEP Chairman on behalf of the
ESGE (OB/GYN University of
Heidelberg, Germany)



Nuno Martins
YEP Co-Chairman (Hospital
Sao Teotonio - Viseu, Portugal)